

# Area Map 9

**Legend**

- Designated emergency evacuation site
- Designated general evacuation center
- Designated welfare evacuation center
- Tsunami evacuation building
- Temporary emergency evacuation site (Tsunami evacuation site)
- Sediment Disaster
- Landslide special danger zones
- Landslide danger zones
- Landslide danger zones (locations scheduled for basic investigation)

**Area Expected to be Inundated by Flood**

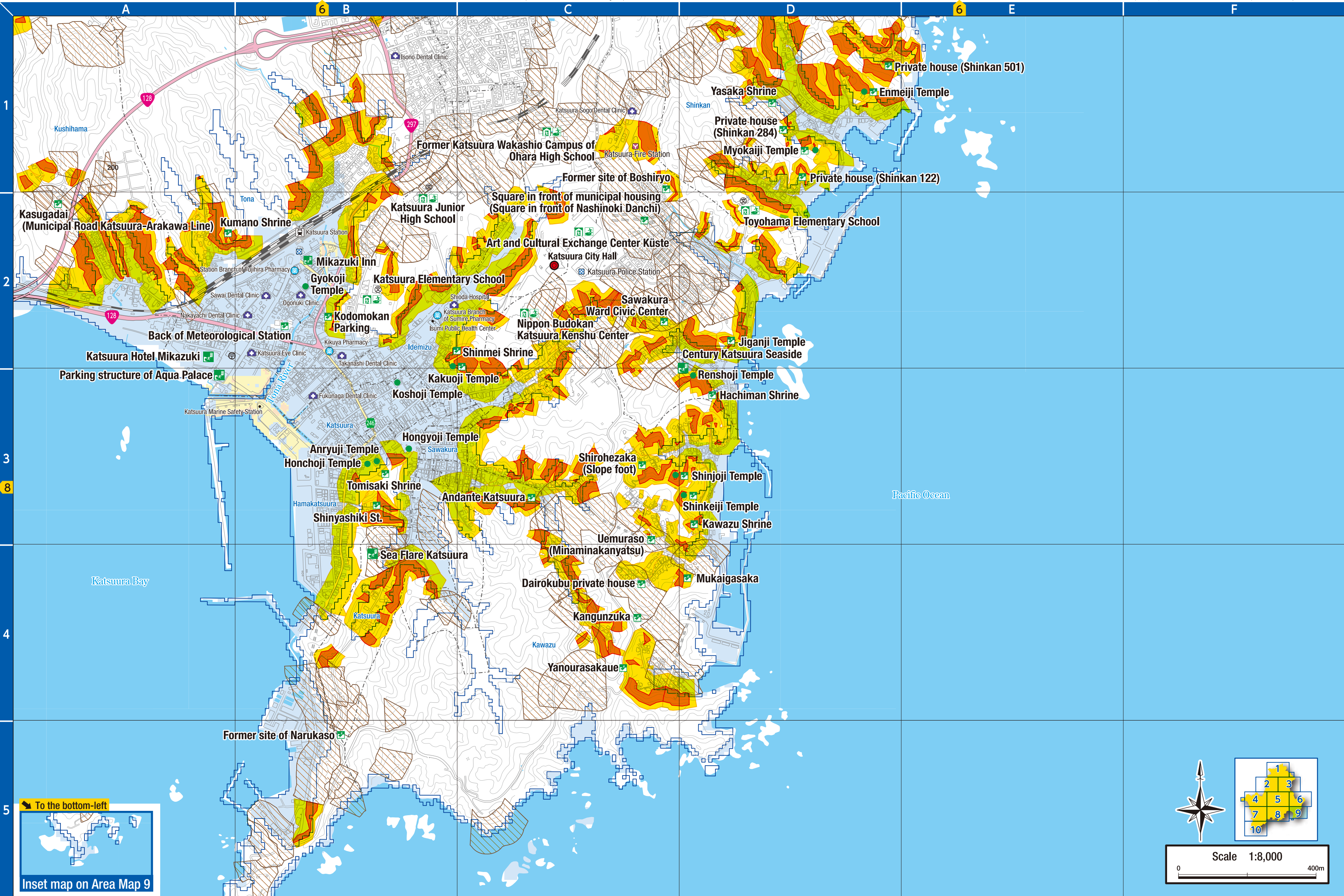
- Inundation depth < 0.5 m
- 0.5 m ≤ Inundation depth < 3.0 m
- 3.0 m ≤ Inundation depth < 5.0 m
- 5.0 m ≤ Inundation depth < 10.0 m
- 10.0 m ≤ Inundation depth < 20.0 m

**Area Expected to be Inundated by the Collapsed Irrigation Reservoir Prioritized for Disaster Prevention**

- Area expected to be inundated by the collapsed reservoir
- Area expected to be inundated by a 10-meter-high tsunami
- Area expected to be inundated by a 16.4-meter-high tsunami

**Area Expected to be Inundated by Tsunami**

- Area expected to be inundated by a 10-meter-high tsunami
- Area expected to be inundated by a 16.4-meter-high tsunami



**To the bottom-left**

**Inset map on Area Map 9**

**To the inset map on Area Map 9**

Scale 1:8,000

0 400m