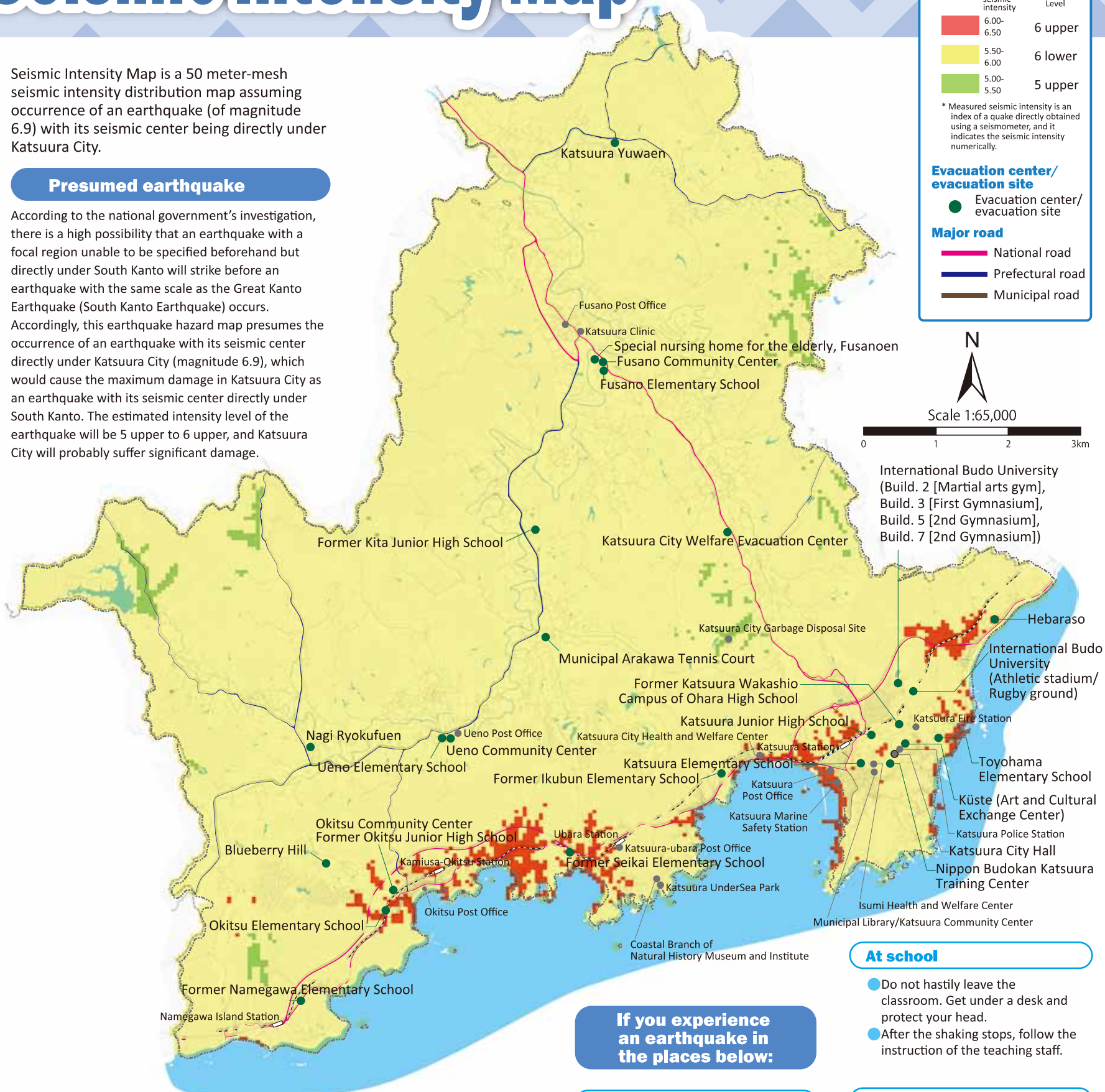


Seismic Intensity Map

Seismic Intensity Map is a 50 meter-mesh seismic intensity distribution map assuming occurrence of an earthquake (of magnitude 6.9) with its seismic center being directly under Katsuura City.

Presumed earthquake

According to the national government's investigation, there is a high possibility that an earthquake with a focal region unable to be specified beforehand but directly under South Kanto will strike before an earthquake with the same scale as the Great Kanto Earthquake (South Kanto Earthquake) occurs. Accordingly, this earthquake hazard map presumes the occurrence of an earthquake with its seismic center directly under Katsuura City (magnitude 6.9), which would cause the maximum damage in Katsuura City as an earthquake with its seismic center directly under South Kanto. The estimated intensity level of the earthquake will be 5 upper to 6 upper, and Katsuura City will probably suffer significant damage.



If you experience an earthquake in the places below:

How to read seismic intensity levels

Seismic intensity level Indicates the strength of a quake at a certain point at the time of occurrence of an earthquake.

Magnitude Indicates the size of the strength of an earthquake.

6 upper

- Unable to keep standing, and unable to move unless you crawl.
- Tossed about by the quaking, you cannot move. Some people are thrown.
- Almost all pieces of unfixed furniture are moved, and many fall down.
- Almost all wall tiles, window glass, and unreinforced brick walls collapse.

6 lower

- Standing is difficult.
- Most pieces of unfixed furniture are moved, and some fall down.
- Some doors do not open.
- Some wall tiles and window glass break and fall down.

5 upper

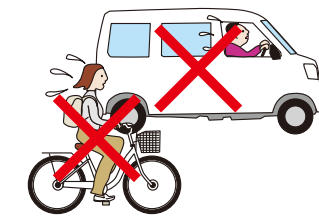
- You cannot walk unless you hold onto something, and feel your action is distracted.
- Many plates and utensils on shelves and many books in a bookshelf drop down.
- TV set falls off the table.
- Some unfixed furniture falls down.
- Some window glass, unreinforced brick walls, and unstable vending machines drop or fall down.

Points to note during evacuation

Points to keep in mind in evacuation activities

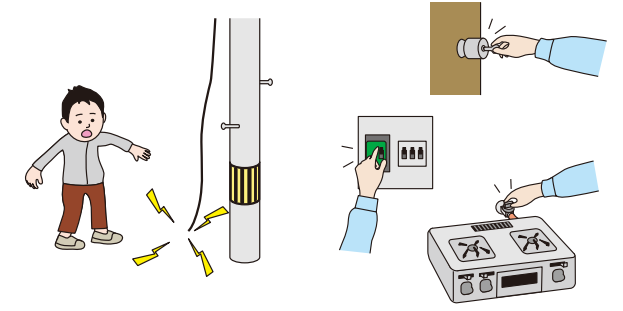
Attire for evacuation

- Put on a helmet, hat, etc.
- Put emergency items into a backpack, and carry it on your back (so you can use both hands).
- Put on a long sleeved top and long pants.
- Put on cotton work gloves or gloves.
- Put on shoes with a thick sole which you are accustomed to wearing.
- During the night, use a flashlight.



Points when evacuating

- Be sure to turn off heaters, kitchen stoves, etc. before evacuation.
- Turn off the gas main and power circuit breaker.
- Minimize the number of items to take with you.
- When you evacuate, keep away from narrow roads, brick walls, vending machines, riverside areas, places with many glass windows or sign boards.
- Walk to the nearest designated evacuation site.
- Evacuate while taking care not to get separated from children, persons with disabilities, elderly persons, and other persons requiring support in evacuation.



Points to note in an evacuation center

Living together

- Always keep in mind the spirit of mutual help.
- Follow the prescribed rules for living together.
- Evacuees independently operate their evacuation center. Actively cooperate in efforts for the center operation.
- Put your name on your belongings, and keep them in one place so they won't be mistaken for others' items.



Keep a sanitary living environment

- Sort out waste, and put it in the designated place.
- When you use the washroom, help keep it clean.
- Regularly clean the place in cooperation with others to maintain a clean living environment.
- You are responsible for taking care of your pet. Follow the evacuation center's rules.



Consideration for persons requiring support in evacuation

- Keep the floor flat so that persons in wheelchairs can go through, and endeavor to create a barrier-free environment.
- Keep the floor flat so that persons in wheelchairs can go through, and endeavor to create a barrier-free environment.
- Involve women in the operation of the evacuation center to share their ideas.



Consideration for safety

- There is a risk that hazards such as afterquakes will continue. Be very careful, and keep away from dangerous places. Report anything abnormal to the administrative body of the evacuation center.
- An unspecified number of people come to an evacuation center. If you find anything wrong, report it to the administrative body of the evacuation center.
- Fire is strictly prohibited in shared spaces. Smoke only in designated areas.



List of evacuation centers/ evacuation sites

Designated evacuation center

No	Name	Location	Area (m ²)	Capacity	Coordinates on the Map
1	Toyohama Elementary School	65 Shinkan	2,934	510	9Map D-2
2	Former Katsuura Wakashio Campus of Ohara High School (Note 1)	1380 Shinkan	1,702	415	9Map C-1
3	Katsuura Junior High School	1120-1 Idemizu	6,277	1,100	9Map B-2
4	Katsuura Elementary School	733-1 Tona	4,607	800	9Map B-2
5	Küste (Art and Cultural Exchange Center) (Note 2)	523-1 Sawakura	4,956	790	9Map C-2
6	Nippon Budokan Katsuura Training Center (Note 3)	582 Sawakura	2,027	500	9Map C-2
7	Former Ikubun Elementary School	1000-1 Matsube	3,129	550	8Map E-2
8	Former Seikai Elementary School	142-2 Ubara	2,959	500	8Map C-4
9	Okitsu Community Center (Note 4)	1222-1 Okitsu	2,585	300	7Map F-5
10	Former Okitsu Junior High School (Note 5)	1222-1 Okitsu	3,992	700	7Map F-5
11	Okitsu Elementary School	1700 Okitsu	2,952	500	7Map F-5
12	Former Namegawa Elementary School	808 Hamanamegawa	1,347	200	10Map D-2
13	Ueno Community Center	34 Uenomotomiyata	167	40	8Map A-1
14	Ueno Elementary School	72 Uenomotomiyata	2,637	450	8Map A-1
15	Former Kita Junior High School (Note 6)	58-2 Kobado	5,225	900	5Map B-2
16	Fusano Community Center	159 Kanita	123	30	2Map F-3
17	Fusano Elementary School	222-1 Kanita	3,217	550	2Map F-3
18	International Budo University (Note 7)	841 Shinkan	5,751	1,200	6Map B-5
19	Blueberry Hill (Note 8)	1514-10 Okitsu	700	175	7Map E-4
(Note 1) Gymnasium (Note 2) When 1F hall is used as a flat earthen floor (Note 3) Large martial arts hall, Training room 1, and Training room 2 (Note 4) School building of former Okitsu Junior High School (Note 5) Gymnasium, Marshal arts gym (Note 6) Gymnasium (Note 7) Build. 2 (Martial arts gym), Build. 3 (First Gymnasium), Build. 5 (2nd Gymnasium), and Build. 7 (2nd Gymnasium) (Note 8) Gymnasium					

Designated welfare evacuation center

No	Name	Location	Area (m ²)	Presumed number of evacuees	Coordinates on the Map
1	Katsuura City Welfare Evacuation Center	272-1 Shindo	127	10	5Map F-2
2	Katsuura Yuwaen (Note 9)	230-1 Ichinogo	100	25	1Map D-3
3	Hebaraso (Note 10)	1930-3 Hebara	120	30	6Map D-4
4	Nagi Ryokufuen (Note 11)	89-13 Nagi	103	25	7Map D-2
5	Fusanoen (Note 12)	88 Kanita	120	30	2Map F-3
(Note 9) Community exchange space (Note 10) Meeting room and conversation room (Note 11) Community exchange space (Note 12) Dining room					

Designated emergency evacuation site/appropriateness by disaster type

No	Name	Location	Area (m ²)	Capacity	Earthquake	Tsunami	Sediment	Flood/inundation	Storm surge	Large fire	Coordinates on the Map
1	Toyohama Elementary School (Note 17)	65 Shinkan	6,012	3,000	○	○	○	○	○	○	9Map D-2
2	Former Katsuura Wakashio Campus of Ohara High School	1380 Shinkan	14,100	7,050	○	○	○	○	○	○	9Map C-1
3	Katsuura Junior High School (Note 17)	1120-1 Idemizu	18,385	9,150	○	○	○	○	○	○	9Map B-2
4	Katsuura Elementary School (Note 17)	733-1 Tona	6,292	3,100	○	○	△ (Note 14)	○	○	○	9Map B-2
5	Nippon Budokan Katsuura Kenshu Center	582 Sawakura	3,500	1,750	○	○	○	○	○	○	9Map C-2
6	Küste (Art and Cultural Exchange Center)	523-1 Sawakura	3,705	1,850	○	○	○	○	○	○	9Map C-2
7	Former Ikubun Elementary School	1000-1 Matsube	3,947	1,900	○	○	×	○	○	○	8Map E-2
8	Former Seikai Elementary School	142-2 Ubara	2,310	1,150	○	△ (Note 13)	×	○	○	○	8Map C-4
9	Former Okitsu Junior High School	1222-1 Okitsu	5,764	2,850	○	△ (Note 13)	△ (Note 14)	○	○	○	7Map F-5
10	Okitsu Elementary School (Note 17)	1700 Okitsu	3,454	1,700	○	△ (Note 13)	△ (Note 14)	○	○	○	7Map F-5
11	Former Namegawa Elementary School	808 Hamanamegawa	1,725	850	○	○	△ (Note 15)	○	○	○	10Map D-2
12	Ueno Elementary School (Note 17)	72 Ueno	7,729	3,850	○	○	○	△ (Note 16)	○	○	8Map A-1
13	Municipal Arakawa Tennis Court	189-1 Arakawa	2,436	1,200	○	○	○	○	○	○	5Map B-4
14	Former Kita Junior High School	58-2 Kobado	23,057	11,500	○	○	○	○	○	○	5Map B-2
15	Fusano Elementary School (Note 17)	222-1 Kanita	11,427	5,700	○	○	△ (Note 14)	△ (Note 16)	○	○	2Map F-3
16	International Budo University	841 Shinkan	29,021	14,500	○	○	○	○	○	○	6Map B-5
17	Blueberry Hill	1514-10 Okitsu	12,278	3,300	○	○	○	○	○	○	7Map E-4
18	Hebaraso	1930-3 Hebara	1,800	900	○	○	○	○	○	○	6Map D-4

Legend ○: Appropriate as evacuation site. △: Use while considering the characteristics of the evacuation site. ×: Do not use as an evacuation site.

(Note 13) Since there is a risk of flood, the 3rd floor of the school building will be used as a tsunami evacuation building. (Note 14) Part of the site is designated as a sediment disaster alert area; careful consideration is required.

(Note 15) Part of the site is designated as a point of debris flow risk; careful consideration is required. (Note 16) Part of the surrounding area is designated as an area expected to be inundated by flood of the Isumi River; careful consideration is required. (Note 17) School yards of all elementary and junior high schools

Tsunami evacuation building

No	Name	Area for use	Location	Sea level	Coordinates on the Map
1	Royal Vent-Vert Katsuura Beach	Shared part on 3F and upper	1928-58 Hebara	8m (3F: 14 m)	6Map D-4
2	Century Katsuura Seaside	Shared part on 3F and upper	411-1 Sawakura	11m (3F: 17 m)	9Map D-2
3	Sea Flare Katsuura	Entrance and lounge part on 1F	280-4 Katsuura	20m	9Map B-4
4	Katsuura Hotel Mikazuki	Masagotei part on 3F-5F	820-1 Tona	3m (3F: 9 m)	9Map A-2
5	Parking structure of Aqua Palace	Parking area on 3F or upper	816-8 Tona	4m (3F: 10 m)	9Map A-3
6	Mikazuki Inn	Shared part and vacant rooms on 3F and upper	258-1 Tona	9m (3F: 15 m)	9Map B-2
7	Parking Structure of the Coastal Branch of Natural History Museum and Institute	Rooftop area	123 Yoshio	9m (rooftop: 15 m)	8Map D-4
8	Former Seikai Elementary School	3F of the school building	142-2 Ubara	9m (3F: 15 m)	8Map C-4
9	Okitsu Community Center (Former Okitsu Junior High School)	3F of the school building	1222-1 Okitsu	6m (3F: 12 m)	7Map F-5
10	Okitsu Elementary School	3F of the school building	1700 Okitsu	7m (3F: 13 m)	7Map F-5

Stockpiles and emergency kit

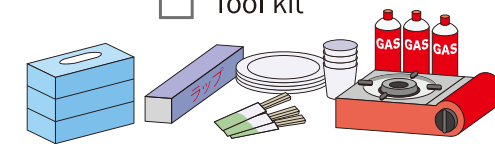
Emergency kit (Put the items in a backpack so that you can take them with you in an emergency.)

- ☐ Cash
- ☐ Health insurance card
- ☐ Bank passbook
- ☐ Seal stamp
- ☐ Driver's license card
- ☐ First aid kit, antiseptic wipes, disinfectant
- ☐ Medicine for stomach or constipation, prescribed medicine
- ☐ Food
- ☐ Candy/chocolate
- ☐ Dietary supplements
- ☐ Drinking water
- ☐ Can opener
- ☐ Picnic sheet
- ☐ Katsuura City Disaster Preparedness Information Book
- ☐ Portable radio
- ☐ Flashlight
- ☐ Dry cell batteries/mobile batteries
- ☐ Lighter/matches
- ☐ Underwear/socks/towel
- ☐ Cold-proof jacket/rain gear
- ☐ Long sleeved tops/long pants
- ☐ Thick gloves/masks
- ☐ Pocket warmers
- ☐ Helmet/disaster hood
- ☐ Thermometer
- ☐ Box cutter
- ☐ Sanitary goods
- ☐ Toothbrush



Stockpiles (Prepare at least three days' supply.)

- ☐ Food (retort food, alpha rice, canned food, etc.)
- ☐ Drinking water (3 L per day per person)
- ☐ Plastic tank/bag for water supply
- ☐ Tissue paper, wet tissue paper
- ☐ Disposable plates, cups, chopsticks
- ☐ Plastic bag
- ☐ Portable gas stove
- ☐ Wrapping film
- ☐ Toiletries
- ☐ Tool kit



Families with babies/ infants or elderly persons

Diapers

Powder baby formula
Liquid baby formula

Household medicine

Women

Sanitary goods

Rolling stock method

New way of stockpiling

Buy a few more food ingredients and processed food on a routine basis. Next time, buy the same amount of food as you have consumed. In this way, you can always stock the same amount of provisions at home. This is called the "Rolling Stock Method." The key point of the rolling stock method is you can stock foods while you consume them in your daily life. In addition, you can use this rolling stock method not only for foods, but also for daily supplies you use in daily life (wet towels, butane gas cartridges, dry cell batteries, pocket warmers, etc.). You are recommended to prepare a portable gas stove and butane gas cartridges along with foods to be stored by the rolling stockpile method. Always stock a certain amount of cartridges while using them in daily life.

Use of food ingredients in refrigerator/freezer

Breads and vegetables can be ready to eat by defrosting them to room temperature.



Buy and stock foods in the fridge. Keep rice, bread, vegetables, frozen food, etc. also in the freezer.

Ice can be used as drinking water when melted.



When there is a power outage, use cold boxes, refrigerant, etc. to store food ingredients.

Prepare kitchen appliances

One butane gas cartridge lasts for around 60 minutes.



Portable gas stove/
butane gas cartridge

When there is a power outage, they are necessary for cooking food ingredients kept in a fridge and emergency food.

Using emergency foods stored by Rolling Stock Method

Rolling Stock Method

Regularly eat (once a twice a month) the food, and buy and stock the same amount of food as you have eaten. As you can store food while eating it, you can also stock retort foods, which have a shorter consumption time limit, as emergency foods.



Other items to be stored

Choose those that need shorter cooking time.



Canned food

Have a balanced diet with canned vegetables or fruits.

Dried noodles (Ramen, pasta, etc.)



Freeze-dried foods (Soup, etc.)

You can eat soup even when you do not have an appetite.

Other ideas



Dried food materials
For minerals and dietary fiber.



Pickled foods
Traditional ways of storing food.

Home garden

Grow vegetables using your garden or balcony.



Source: Japan Weather Association website "Tokusuru-bosai (Useful disaster management tips)," Cabinet Office website "Disaster management information page."

My timeline

Make your own evacuation action plan to prepare for sediment disaster, flood, and storm surge.

From STEP 1, check the following items and put a check mark (✓) in the box.

STEP 1: Check the location of your house.

☐ My house is located in an expected inundation area.

☐ My house is located in a landslide disaster alert area/special alert area.

☐ My house is not located in either of those areas, but it may be damaged by landslide disaster or inundation, or it has been damaged in the past.

STEP 2: Evacuation destination and evacuation route

Decide where to evacuate, such as a house of your relatives or acquaintances and evacuation centers. Check whether there are any dangerous locations along the route.
* Evacuation from the dangerous areas is a principle.
However, if you live on the upper floor of a sturdy building such as a condominium, and you have a sufficient amount of water and foods, you can evacuate in place at home.

Evacuation destination 1

Place: _____

Dangerous place: _____

Time required for evacuation: _____

Evacuation destination 2

Place: _____

Dangerous place: _____

Time required for evacuation: _____

STEP 3: Method to get necessary information

From where will you get the information necessary for evacuation? (Also check “Disaster prevention information using the Internet” on the back cover.)

☐ Administrative radio system ☐ Katsuura administrative email on disaster prevention ☐ Katsuura mate ☐ Yahoo! Disaster Prevention Bulletin

☐ Japan Meteorology Agency website (no evacuation information) ☐ Chiba Prefecture disaster prevention portal site ☐ TV (including d button) ☐ Radio

☐ Other ()

Even when warnings or evacuation information are not issued, if you feel danger by the surrounding situation, evacuate immediately!

STEP 4: Make an action plan.

Talk with your family about evacuation preparation, timing to start evacuation, how to communicate, what to check, etc.

	Alert level 1	Alert level 2	Alert level 3	Alert level 4	Level 5
Evacuation information			Evacuation of senior persons, etc.	Evacuation instruction	Emergency safety measures
Weather information	Early advisory information	Heavy rain/flood advisory	Heavy rain/flood warning	Land slide alert information	Disaster has occurred or is impending.
Disaster information		Flood advisory information (Isumi River)	Flood alert information (Isumi River)	Flood risk information (Isumi River)	
		Storm surge advisory (Level 3 when a high probability of a subsequent warning is mentioned)	Storm surge warning	Storm surge emergency warning	
Guide for action	Prepare yourself for disaster.	Prepare for evacuation. Check the action.	Start evacuation of senior persons, pregnant women, and others who require time to evacuate.	Everyone must evacuate from dangerous places.	
Check actions to be taken			<div>Timing to evacuate</div> <div><input type="checkbox"/> Alert level 3 <input type="checkbox"/> Alert level 4</div>		
	<div>Start preparing for evacuation</div> <p>List actions to be taken when preparing for evacuation.</p> <div><input type="checkbox"/> Check dangerous locations in the disaster preparedness information book.</div> <div><input type="checkbox"/> Check evacuation sites and evacuation routes.</div> <div><input type="checkbox"/> Check the movement and schedule of your family.</div> <div><input type="checkbox"/> Lock the windows and the back door.</div> <div><input type="checkbox"/> Tidy up the outside around the house.</div> <div><input type="checkbox"/> Check the stock of prescribed medicine.</div> <div><input type="checkbox"/> Charge your mobile phone.</div> <div><input type="checkbox"/> Check your attire for evacuation.</div> <div><input type="checkbox"/> Check the emergency kit.</div> <p>Add other necessary items, if known.</p> <div><input type="checkbox"/> _____</div> <div><input type="checkbox"/> _____</div> <div><input type="checkbox"/> _____</div> <div><input type="checkbox"/> _____</div> <div><input type="checkbox"/> _____</div> <div><input type="checkbox"/> _____</div>		<div>Start evacuation.</div> <p>List actions to be taken at the time of evacuation.</p> <div><input type="checkbox"/> Check the availability of the evacuation center.</div> <div><input type="checkbox"/> Make sure that fires are out and all doors and windows are locked.</div> <div><input type="checkbox"/> Turn off the breaker to prevent fire by re-energization when a power failure is restored, or unplug electrical appliances.</div> <div><input type="checkbox"/> Contact your family to let them know of your evacuation destination.</div> <div><input type="checkbox"/> If you cannot reach your family, leave a message at home.</div> <div><input type="checkbox"/> Take the emergency kit with you when evacuating.</div> <div><input type="checkbox"/> Evacuate before it gets dark.</div> <div><input type="checkbox"/> Evacuate before rain or wind becomes stronger.</div> <p>Add other necessary items, if known.</p> <div><input type="checkbox"/> _____</div> <div><input type="checkbox"/> _____</div> <div><input type="checkbox"/> _____</div> <div><input type="checkbox"/> _____</div> <div><input type="checkbox"/> _____</div> <div><input type="checkbox"/> _____</div>		Make best efforts to protect your life.
					When it is more dangerous to get out of the building, evacuate vertically to a safe place (2nd floor, etc.) of the building.

Disaster prevention memo in your house

This is a page for listing contact information, etc. needed in an emergency. Make a list of phone numbers, etc. in advance.

Address

Name

Phone Number

Evacuation center

Evacuation center when the family members become separated

Contact details of family members	Name	Phone (Work/School)	Address	Memo: Relationship with the family

Contact details of relatives	Name	Phone (Work/School)	Address	Memo: Relationship with the family

First aid data of family members	Name	Date of birth	Blood type	Allergies	Medicines	Clinical history

Emergency contact	Contact	Phone Number	Contact	Phone Number

How to use Disaster Emergency Message Dial (171)

What is Disaster Emergency Message Dial?

When a disaster occurs and calls to the affected area are difficult, NTT operates Disaster Emergency Message Dial, which enables users to record and replay messages concerning information and confirmation of the safety of those who are supposed to be in the disaster affected area.

Recording messages	171-1-0000-00-0000 (Phone number to call)	Effective period	Until the end of the service period
Replaying messages	171-2-0000-00-0000 (Home phone number)	Recordable number of messages	1–20 messages per number
Recordable message length	30 seconds or less per message	Phone that can be used	Fixed-line phone, IP phone (including 050), and mobile phone

37

38